

REACH

Photo by
FundiFix/REACH Kenya.

10

YEARS OF
REACH KENYA

IMPROVING WATER
SECURITY FOR THE POOR

ABOUT

The REACH programme is a collaboration between the University of Oxford, United Kingdom and the University of Nairobi, Kenya. The programme is funded by the Foreign Commonwealth Development Office (FCDO) and brings together a consortium of global leaders in water science, policy and practice. Please visit [www.reachwater.org.uk] for additional details. REACH established science practitioner partnerships with government, private sector and civil society stakeholders in long-term, instrumented, and interdisciplinary observatories to understand and influence the most significant but uncertain risks within the water security domain. **In Kenya, the programme established the Kitui and Turkana Water Security Observatories.**

The REACH programme developed a global research and impact strategy (2020-2024), which provided a roadmap for improving water security for 10 million people by 2024. Additionally, the REACH exit strategy informs how to sustain the programme's results, identifies how to sustain the impact and explores how to scale up and out the programme's lessons and models.

THEMATIC AREAS



**Building capacity for
Climate Resilience**



**Strengthening institutions
for water security**



**Improving water
quality management**



**Reducing inequalities in
water security**

WHAT NEXT?

- ≈ REACH's work on interlinked groundwater systems, institutions, water quality management and reducing inequalities has informed and will continue to inform a portfolio of national and regional initiatives
- ≈ Continue to support government stakeholders in county government climate committees and county steering committees through capacity building and partnerships

- ≈ Inform the network of partners and stakeholders in the Water Security Observatories to ensure the handover of data and equipment and to capture and document learning in public records
- ≈ Archiving and sharing data – www.reachwater.org.uk
- ≈ Use innovative approaches to disseminate REACH's research and impact to relevant interests and investors in global water security
- ≈ In Kenya, Kitui and Turkana counties will work to consolidate reporting and effective communication with the other 45 counties and relevant stakeholders
- ≈ Identify target geographies and typologies for scale out
- ≈ The UoN's Institute for Climate Change and Adaptation can provide a national and regional hub to share REACH's work and lessons working with county governments, national government and regional bodies,
- ≈ Support national meteorological agencies to develop specific climate information to inform national adaptation plans that consider the impact of climate on marginal populations
- ≈ National and county governments are supporting the adoption of new water security models and interventions
- ≈ Invest in knowledge: develop plans for a national water security conference linked to Kenya UNESCO IHE program, and focused on climate adaptation training at both county and national levels
- ≈ Establish Research Chairs in leading Universities in Kenya to provide strategic leadership for water security research in the Global South

TEAM INVOLVED

University of Nairobi:

Prof. Daniel Olago, Prof. Maggie Opondo, Prof. Gilbert Ouma, Prof. Albert Mumma, Prof. Salome Bukachi, Dr. Florence Tanui, Dr. Dalmas Omia, Charles Maxwell Odira, Nerima Were, Dennis Ong'ech, Bonface Wanguba, Cheruiyot Buses Kipng'eno, Mercy Musyoka, Daniel Esukuku, and Dr. Simeon Dulo

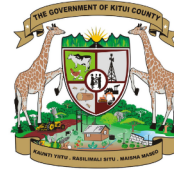
University of Oxford:

Prof. Robert Hope, Prof. Katrina Charles, Cliff Nyaga, Dr. Sophie Haines, Dr. Sonia Hoque, Dr. Saskia Nowicki, Dr. Johanna Koehler, Dr. Ellen Dyer, Dr. Catherine Grasham, Michael Rouse CBE, Dr. Callum Munday, and Dr. Sebastian Engelstaedter

OUR PARTNERS



**MINISTRY OF WATER,
SANITATION AND IRRIGATION**



How to cite this document.

REACH Kenya (2024), 10 Years of REACH Kenya: Improving Water Security for the Poor, www.reachwater.org.uk.

CONTACT US

REACH Global

- www.reachwater.org.uk
- reach@water.ox.ac.uk
- [@reachwater](https://twitter.com/reachwater)
- [@reachimprovingwatersecurit5571](https://www.youtube.com/@reachimprovingwatersecurit5571)
- www.linkedin.com/company/reach-water-security

REACH Kenya

**Institute for Climate Change
and Adaptation**

University of Nairobi

- P. O. Box, 30197 - 00100
Nairobi, Kenya
- +254-20-4914311
+254-20-4914304
+254-20-4914305
- reachkenya@uonbi.ac.ke

OUR MILESTONES

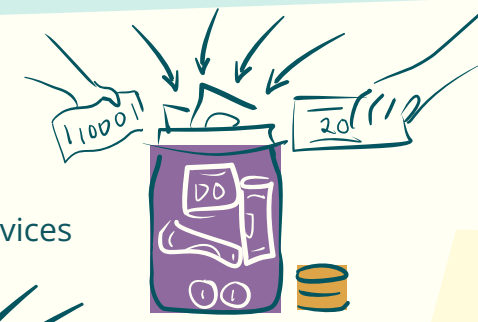
2015

- Launch of REACH in Kenya
- Country Diagnostic report, Kenya



2016

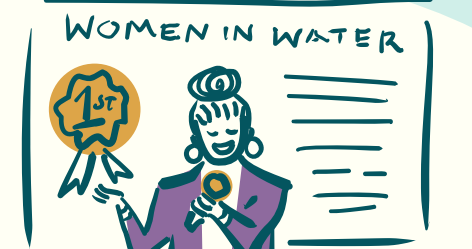
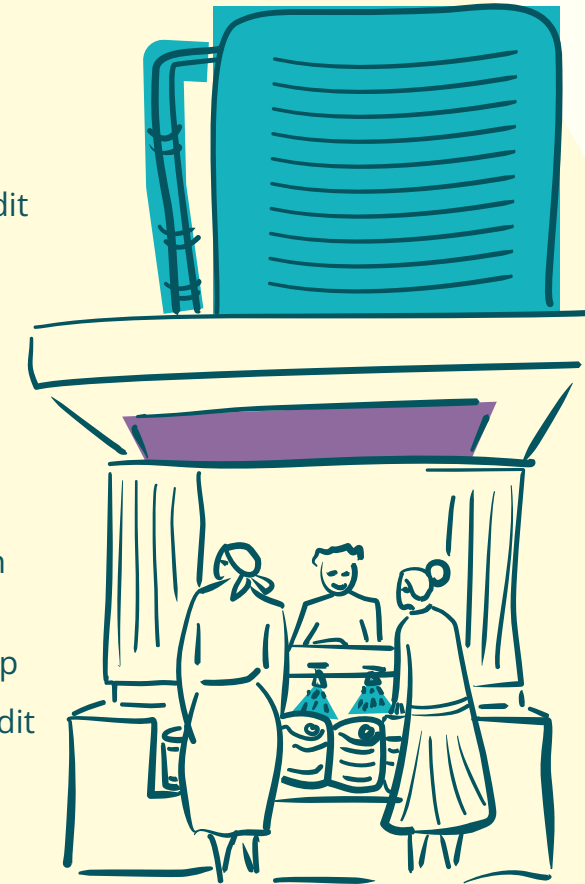
- Implemented the Fundi Fix Model in Kitui to address the gap in maintaining rural water services



3,100
RURAL WATER POINTS IN KITUI

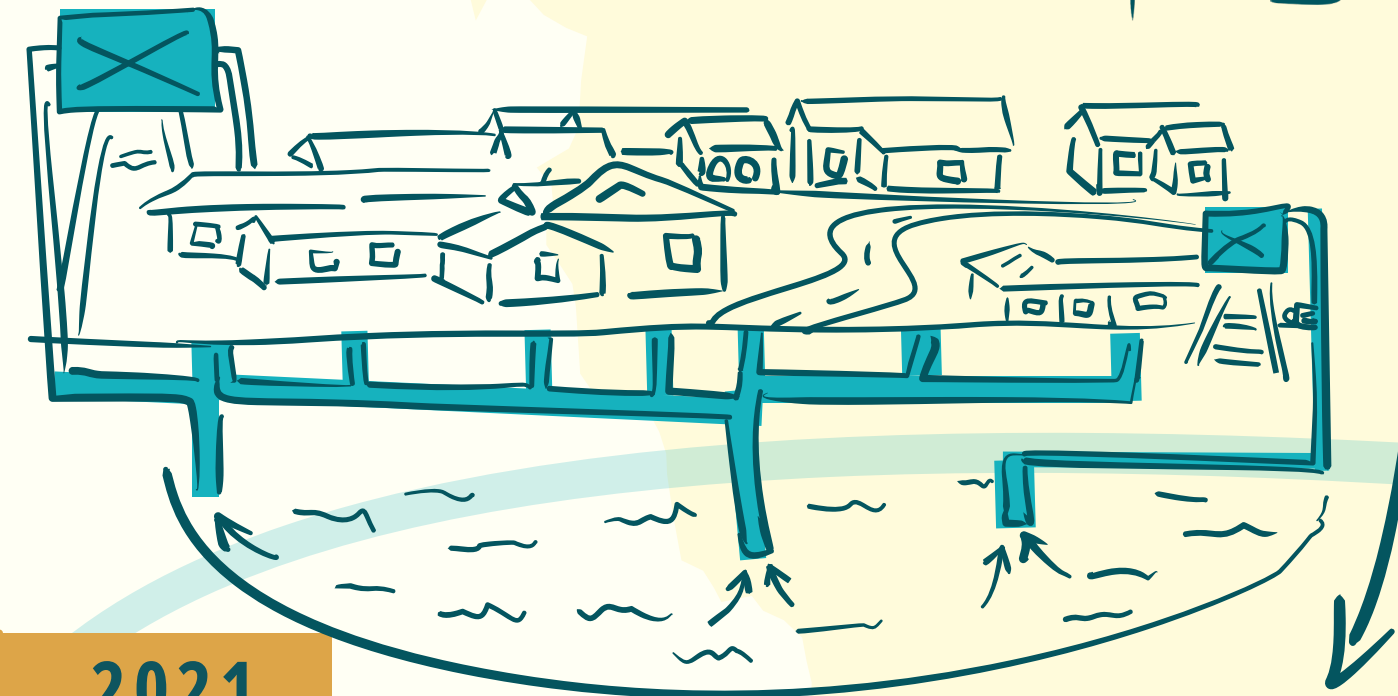
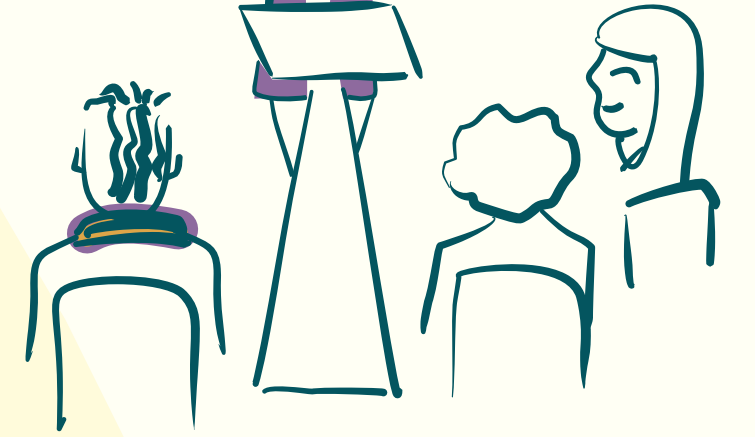
2017

- County-wide water audit mapped up to 3,100 rural water points in Kitui
- Findings informed discussions at WASH fora, influencing water policy and a county WASH database design
- REACH National Stakeholders Workshop
- Undertook a Water Audit in Turkana



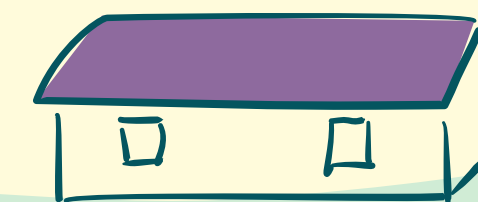
2018

- Contribution to Turkana County Integrated Development Plan (CIDP)
- First REACH Women-in-Water forum held in Lodwar, Turkana



2019

- Kitui County school WASH survey covering 1,887 schools
- Supported the review, finalisation and operationalisation of the Turkana Water Act, 2019
- REACH Women-in-Water forum held in Kitui
- Supported the drafting of the Kitui County Water Bill



1,887
SCHOOLS WERE SURVEYED



2020

- Developed the first comprehensive hydrogeological model and water quality map for the Lodwar Alluvial Aquifer System (LAAS)
- Contribution to the Turkana Annual Development Plan (ADP)

1.3 BILLION
THE AQUIFER IS ESTIMATED TO HOLD 1.3 BILLION CUBIC METRES OF RENEWABLE & PORTABLE WATER

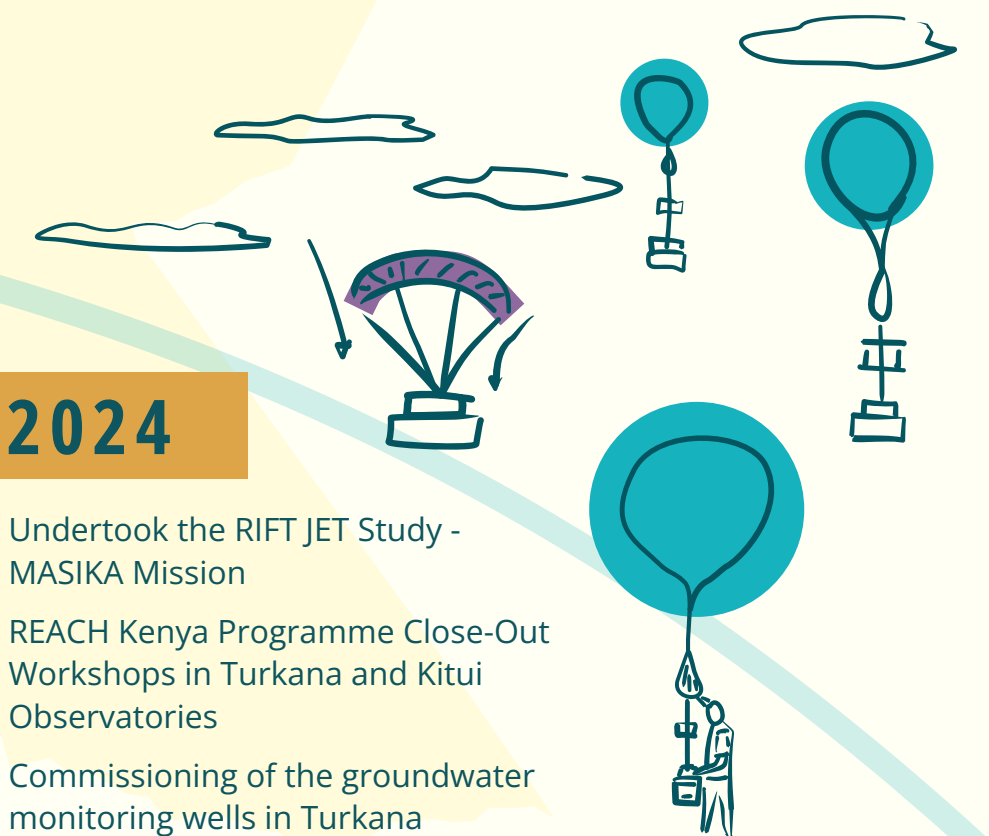


2023

- Initial research completed for the REACH-WISER comparative study on water security, inequalities and climate resilience in Bangladesh, Ethiopia and Kenya
- Support to the County Government of Turkana for the Participatory Climate Change Risk Vulnerability Assessment for 30 Wards
- Supported development of the Turkana County Climate Change Action Plan 2023-2027
- Hosted the REACH National Stakeholder Forum
- Developed the Environmental Monitoring and Management Plan for the Lodwar Alluvial Aquifer System (LAAS)
- Launched the Environmental Monitoring and Management Plan for groundwater

2024

- Undertook the RIFT JET Study - MASIKA Mission
- REACH Kenya Programme Close-Out Workshops in Turkana and Kitui Observatories
- Commissioning of the groundwater monitoring wells in Turkana



2021

- Supported the development of the Turkana County Climate Change Policy, Act, Regulations Launch and Ward Committee Training.
- Undertook Turkana Jet Study (RIFT JET) in Marsabit
- Carried out the Lodwar Municipality Water Supply Network Analysis
- Report published: Delivering Safely Managed Water to Schools in Kenya
- Contribution to Turkana Annual Development Plan (ADP)

2022

- Water safety planning after Turkana hydrogeology fieldwork
- Launch of REACH Lab project - developing and testing water quality monitoring laboratories in Kitui
- Contribution to Turkana County Integrated Development Plan (CIDP)
- Supported the operationalization of the Turkana County Climate Change Policy, Act, Financial Regulations and Ward Committees
- Environmental Management Monitoring and Water Infrastructure Training for Turkana County Government Officials and LOWASCO management team.
- Turkana County Government fencing of the sensitive Lodwar Alluvial Aquifer zones in Turkana Central

